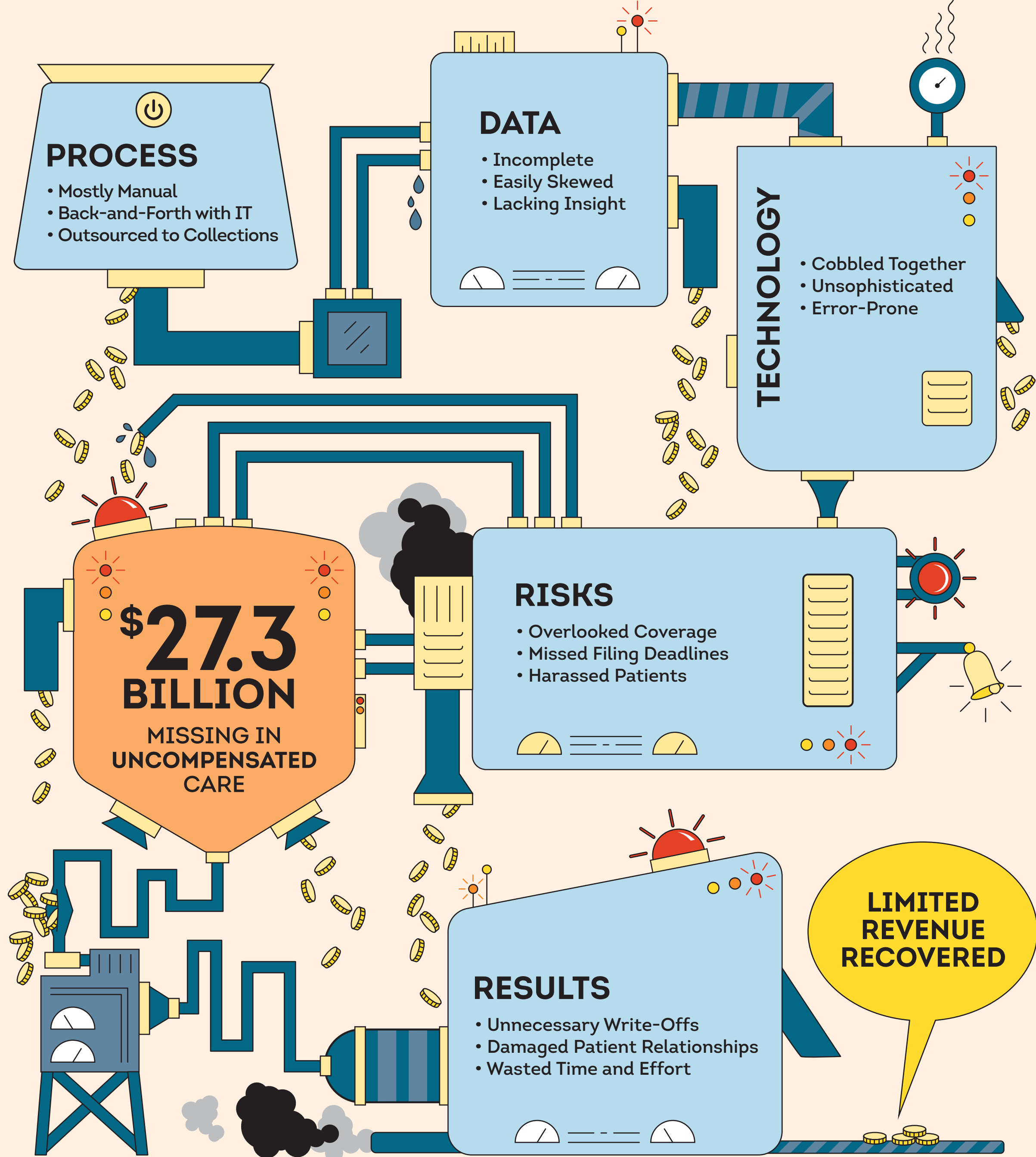


Build a lean, mean, revenue machine.

There's revenue trapped in your reimbursement engine – and insurance coverage discovery solutions can help you find it. Unlike traditional reimbursement processes, insurance coverage discovery solutions are automated, low risk, and proven to deliver bottom-line results.

TRADITIONAL REIMBURSEMENT:

manual, error-prone & broken



INSURANCE COVERAGE DISCOVERY:

automated, low-risk & proven

INSURANCE COVERAGE DISCOVERY BENEFITS

DEPLOY

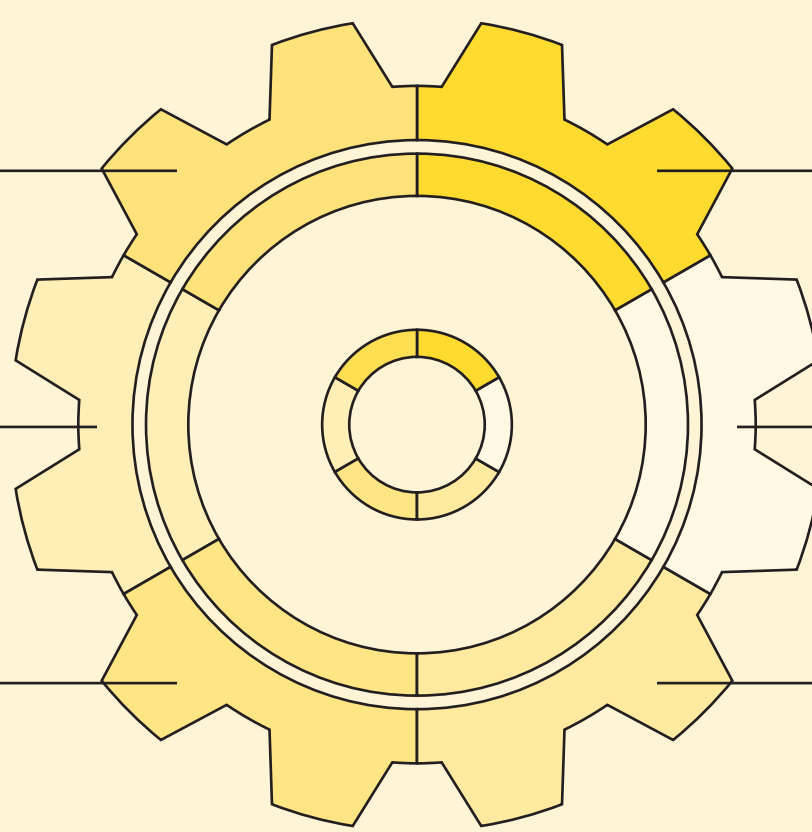
a single solution that integrates seamlessly with existing systems

AUTOMATE

processes to minimize human oversights and errors

MAKE

more filing deadlines



FOCUS

patient experiences on care - not collections

DRIVE

meaningful bottom-line results

PAY

when the coverage pays

INSURANCE COVERAGE DISCOVERY FEATURES

ACCELERATE

decision making with powerful analytics

UNLOCK

trapped revenue with comprehensive black box data

IDENTIFY

discrepancies between hospital and payer data

UNCOVER

commercial eligibility you couldn't find on your own

REVEAL

billable accounts not previously captured

ACCESS

relevant data quickly

INSURANCE COVERAGE DISCOVERY RESULTS

More than
\$1 BILLION
 in recovered revenue²

CONVERT
1-5%
 of uncompensated care into Medicaid, Medicare and/or commercial insurance

UP TO
50%¹
 increase in POS collections

1-2%
 increase in net Medicaid payments

LEARN MORE

If you're interested in improving your reimbursement process with an automated solution, contact TransUnion today. Call **(888)-791-3088** or visit **transunionhealthcare.com**

Sources:
¹Michelle Paoletti, Patient Access Manager at Saint Alphonsus Medical Center
²Results of eScan post-service eligibility system, a TransUnion Healthcare Solution